

Statistical Services

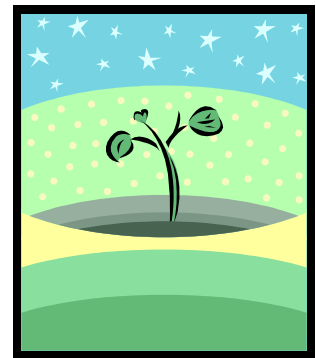
SAVANT TECHNOLOGIES

More than ever, the analytical laboratory must be able to show that its tests results are of the highest quality.

Savant Technologies offers applied training and consultancy in the statistical tools that will assist laboratory staff to demonstrate the confidence they have in their work.

Training is presented in a range of flexible packages, designed to meet all individual and business needs, so that it will equip laboratory personnel for the demands of the modern laboratory.

Consultancy provides expertise in the scientific and management tools that generate, process and organise technical and business information.



SAVANT
TECHNOLOGIES

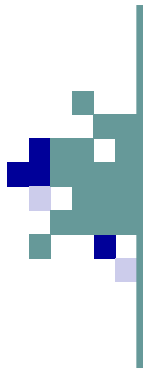
Brynawel
Llanafan Road, Cilmery
Builth Wells
Powys
LD2 3PA

Leslie Coveney MSc C.Chem
MRSC FIFST

Phone: 01982-553244
Mobile: 07879-424543
E-mail: l.coveney@savant-technologies.co.uk

Savant Technologies is a trading name of Cilmery Fields Ltd, registered in England and Wales. Reg. No 6104399. Registered address as above.

**Services that
matter. Benefits
that count**



Laboratory Accreditation

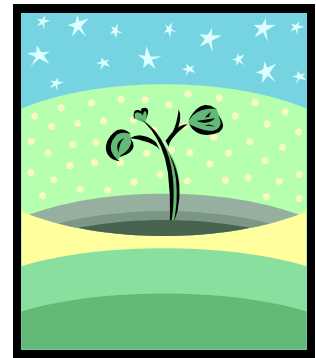
SAVANT TECHNOLOGIES

All training is constructed to meet the needs of delegates. Location, times and duration for on-site or closed courses are flexible, being determined by the needs of the business. A fully equipped training suite is available at the Savant Technologies office in Builth Wells.

A strong emphasis is placed on practical examples with delegates' own material used where possible.

Subjects covered during training may include, but are not limited to, the following: introduction to statistical terms; distributions and populations; calculating and comparing standard deviations; precision terms; calculating and comparing averages; accuracy terms; identifying outliers; limits of detection and quantification; uncertainty budgets for calibrations and test methods; calibration using linear regression; analysis of variance; statistical models for proficiency testing schemes; constructing and using laboratory control charts.

Training materials provided include course notes, worked examples and calculators. Examples and exercises may make use of computer spreadsheets where appropriate



PUBLIC COURSE TRAINING

CLOSED COURSE AND ON-SITE CLASSROOM TRAINING

SIDE BY SIDE TUITION

SPREADSHEET BASED TRAINING

DESIGN OF QUALITY ASSURANCE SYSTEMS

COMPUTER BASED SOLUTIONS

STATISTICAL CONSULTANCY

Services that matter. Benefits that count